

## D2 Dynamic calibrator

The D2 high - precision diluter is an gas standard sample preparation system. Inside the instrument, different dilution configuration can be configured according to the needs. It can not only use the traditional MFC calculation method to dilute samples but also adopt the differential pressure method to achieve a dilution ratio of up to 20,000:1 automatically. In the MFC mode, up to 5 MFCs can be installed inside. It can be customized according to user needs for single standard gas sample dilution or multi - cylinder gas mixing. And a multi - stage dilution device is available for preparing multi - compound mixed gases and trace - level compounds gases. For corrosive samples, users can choose fully inert treated parts.

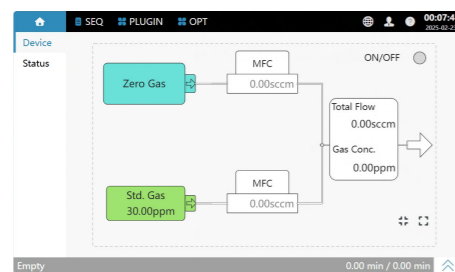
In the differential pressure mode, there is a standard gas buffer tank inside the instrument. Users can directly fill the tank with a certain pressure of dilution gas and standard gas. The instrument will only automatically fill the amount of standard gas (or dilution gas) corresponding to the required pressure, with no waste of standard gas. The filling process are automatically proceed by the software.

With Asicotech's advanced automatic control algorithm and compensation system, users can also achieve secondary dilution, with a final dilution factor of up to 20,000.

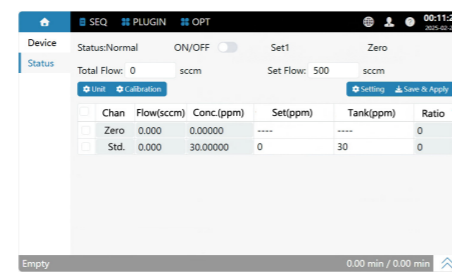


D2

- Automated vacuum pump and optional pressure monitoring for easy tubing purging
- Optional MFC or differential pressure method
- Dilute up to 4 standard gas bottles
- 36 pre - set dilution ratios available
- Differential pressure mode: MFC for 20,000x secondary dilution
- UniLite plugin connects to M6/M3 software on chromatograph; no separate PC software needed
- 7 - inch touch screen
- Check status, edit and download parameters via browser
- I/O connects to mainstream GC for sync via EVENT, BCD port



UI



Programming the dilution process

### Mechanical and Electrical Parameters

Temperature: 0°C to 50°C (operating); -20°C to 70°C (storage)

Humidity: 10% to 90% (operating); 5% to 90% (storage)

Touchscreen: 7" touchscreen

Interface: 1/8" Ferrule

Sample line heating: up to 330 degC.

Atmospheric balance valve: Optional

Tubing purging: Fully automatic

Supporting software: Supports UniLite plugin; Supports PC- side control software

Access mode: Instrument status can be directly viewed or controlled via browser

Sample transfer line: 1/16" inert coating stainless- steel tubing

Interfaces: Serial port RS485, EVENT, BCD

Power supply: 220V, 50Hz

Power: 100W

Dimensions: 350x400x260mm

Net weight: 15kg

### MFC Dilution Mode

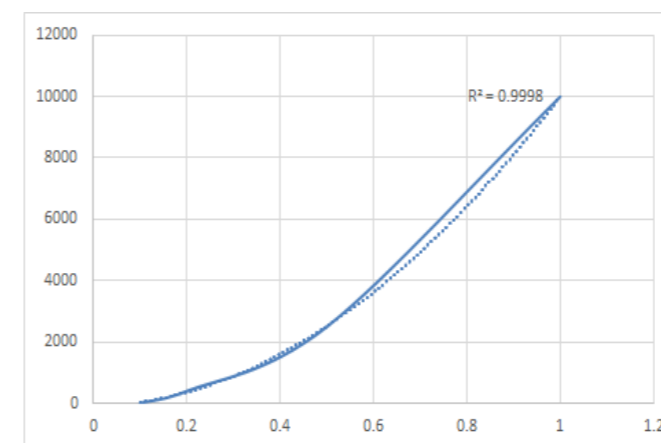
Number of MFCs: Up to 5

Maximum dilution ratio: 2500:1

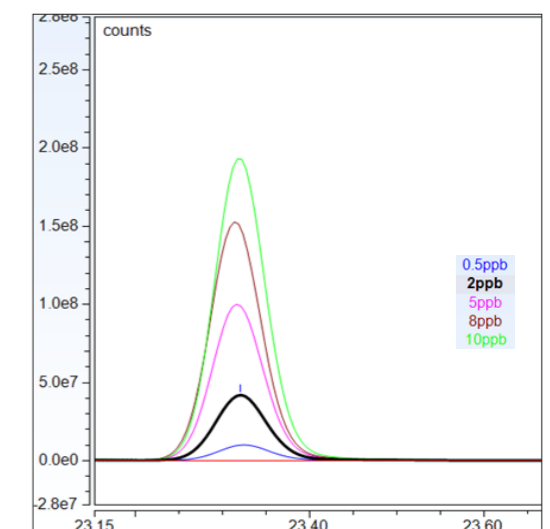
### Differential Pressure Dilution Mode

Built- in sample tank: 1200ml (with coating)

Maximum dilution ratio: 20000:1



Standard curve of methyl mercaptan



Standard curve of pentanal