

Handheld Laser-Induced Breakdown Spectrometer for Analyzing Alloy

Instruction



Copyright Statement

Without the written permission of the company, no unit or individual may extract or copy part or all of the content of this document without authorization. And it shall not be disseminated in any form.

Trademark Notice

All other trademarks or registered trademarks mentioned in this document are owned by their respective owners.

NOTICSE

Due to product version upgrades or other reasons, the content of this document will be updated from time to time. Unless otherwise agreed, this document is intended as a guide for using only. And all statements, information and recommendations in this document do not create any express or implied warranties.

Notice of Safety

Please read this manual completely and be familiar with the functions of the instrument before using this equipment, incorrect operation may cause injury to yourself or others, and may also cause damage to the product and property loss.

To ensure the performance and safety of the product, do not use parts that are not provided or recommended by the company, and always follow the user manual issued by the company to ensure proper installation and use of the product.

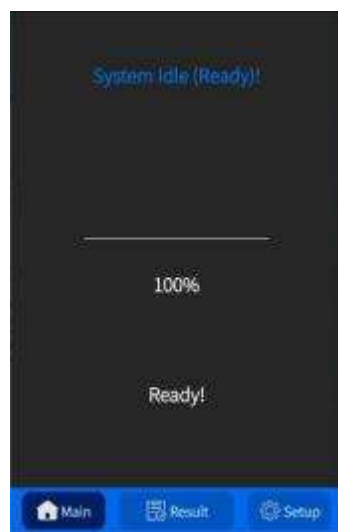
Although this product uses an eye-safe wavelength laser as the excitation source, in order to avoid any potential danger, do not directly aim the laser of this device at a person or animal, especially the eyes and other parts, and press the detection button under any circumstances.

Do not disassemble the machine or attempt to repair the hardware by yourself. When the instrument fails, try restarting the device first, if the problem persists, contact the manufacturer or dealer for technical support.

Catalog

NOTICSE	1
1. QuickStart	1
2. The Brief Introduction of LIBS	2
3. Directions for Hardware	3
3.1 Instruments and Components	3
3.2 Battery Charging and Dismounting	4
3.3 Turn on and off	5
3.4 Test Samples	6
3.5 Instrument Networks and Equipment Maintenance	10
4. Instructions of Software	12
4.1 Software Interface	12
4.2 Instrument Operation Parameter Setting and Optimization	16
4.3 Calibration	16
4.4 Saving and Exporting Testing Datas	21
4.5 Add the Alloy Grade	23
4.6 Modify and Delete the Alloy Grade	24
4.7 System Settings and Photocamera Settings	24
5. Troubleshooting	26
5.1 The test process does not start after pressing the detection trigger	26
5.2 The instrument automatically shuts down during use	26
5.3 The results of the analysis differed greatly from the standard values	26
6. Abbreviation Search.....	27
7. After-sales Information.....	28
8. Revision History	28
Disclaimer of Warranties	29

1. QuickStart



2. The Brief Introduction of LIBS

Laser-Induced Breakdown Spectrometer (LIBS) is an efficient and rapid method for elemental analysis that enables real-time analytical detection of solid samples without sample processing.

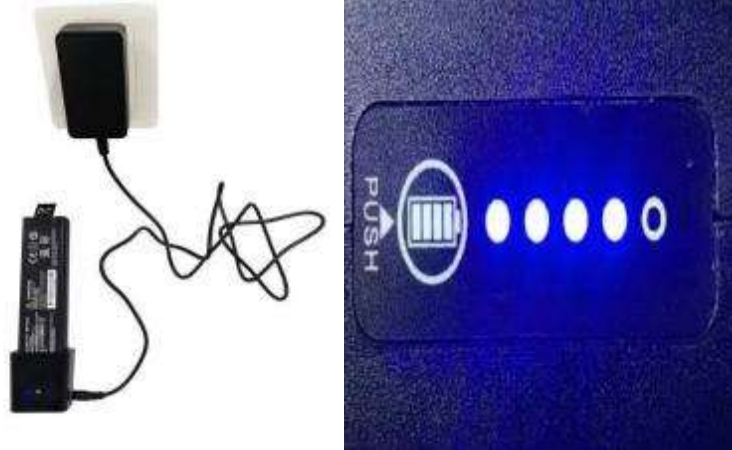
At the heart of the LIBS technology is the use of laser pulses to instantaneously heat the surface of a sample and generate plasma. And then use the spectral information emitted by the plasma for chemical composition analysis. It can be used to analyze a variety of materials, including metals, ores, glass, ceramics, plastics, etc. So it is widely used in materials research, quality control, environmental monitoring, resource exploration and other fields.

Compare to XRF (X-ray Fluorescence Spectrometer), the LIBS technology is **one of the most effective means for the direct analysis of Al-Mg alloy or lithium-boron-carbon alloys in the world, without radio.**

LIBS as a rapid analysis technology has been applied for decades. Using advanced miniature high-energy pulsed laser technology and micro spectral analysis technology. Our company provides handheld LIBS analysis instruments, which have the advantages of portability, high efficiency and multi-element analysis, and can adapt to the needs of various complex on-site analysis scenarios.

3.2 Battery Charging and Dismounting

This product uses a base for charging with a dedicated battery that comes with the instrument, and the battery is plugged into the charging base for charging. **When replacing the battery, turn off the instrument first.** Press the button on the end of the battery to check the battery level. And the number of lights on the five dots is the battery level.



Battery Dismounting:

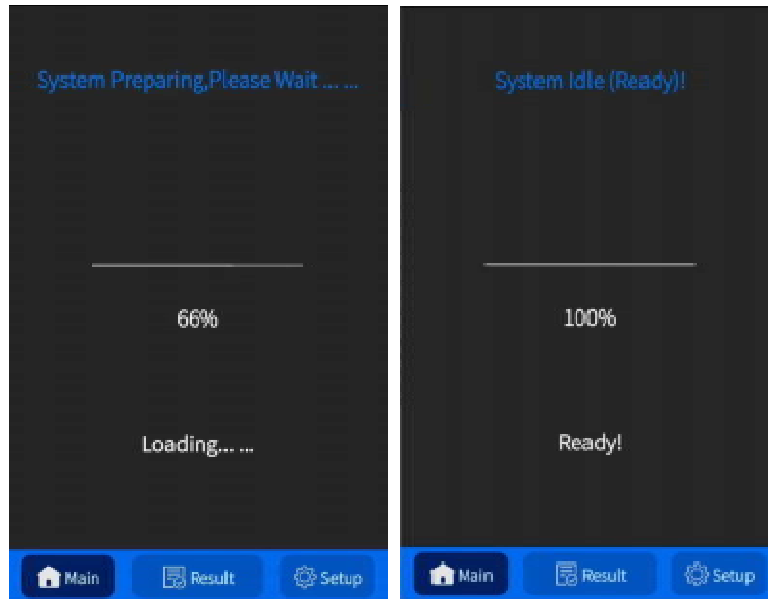
- a) **Press the black bayonet switch on the end of the handle to automatically pop open the lid of the battery compartment.**
- b) **Pull the strip on the end of the battery to remove the battery.**
- c) **Install the battery (shown in the figure below). First, insert the uneven port end of the battery into the muzzle direction with a wide notched end (It can only be installed in one direction). And snap the lid tightly until it clicks.**



3.3 Turn on and off

a) Press and hold the trigger for 5 seconds to turn on the instrument. The instrument screen will light up after a short wait. And it will automatically enter the main interface.

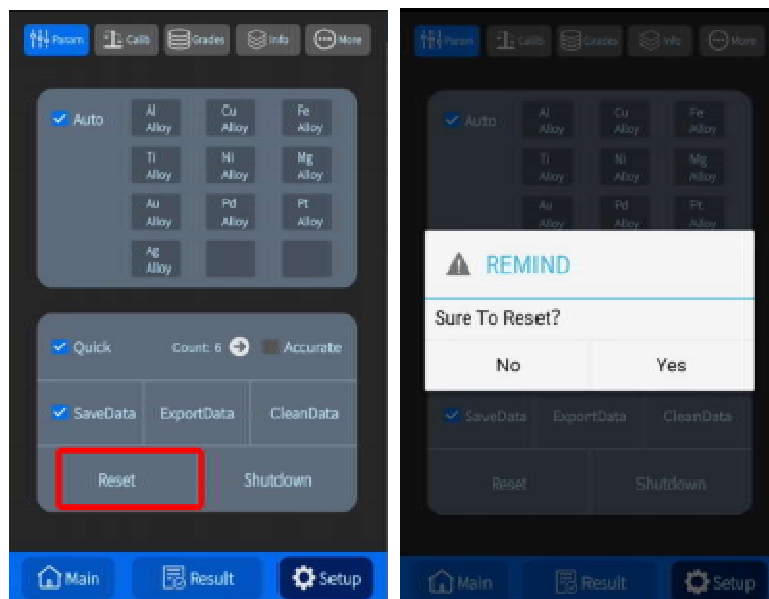
When the progress bar reaches 100% and the instrument prompts "System Idle(Ready)!". The sample can be used to analyze.



b) When the device is turned off, click "Setup" to enter the setting interface, then click the "Shutdown" button and click "Yes" to confirm. The instrument will automatically enter the shutdown process. And the device will be completely powered off after a short wait. Or press and hold the trigger for more than 3 seconds. The instrument interface will pop up a window prompting whether to shut down. Click "Yes" to confirm. And the instrument will automatically enter the shutdown process. **When the instrument is not in use for a long time (half a year), please remove the battery from the instrument and store it.**



If the instrument has a software error and the touch screen responds. But the trigger is not activated. You can click the "Reset" button on the settings interface and click "Yes" to confirm. And after a short wait. It can return to normal and release the alarm.



If the instrument has abnormal conditions such as software crash and unresponsive touch screen. Press and hold the switch trigger for 3 seconds to force the analytical instrument to turn off. And the device can be turned on again after a short wait.

3.4 Test Samples

Parameter settings of analyzing (The following are the default parameter settings

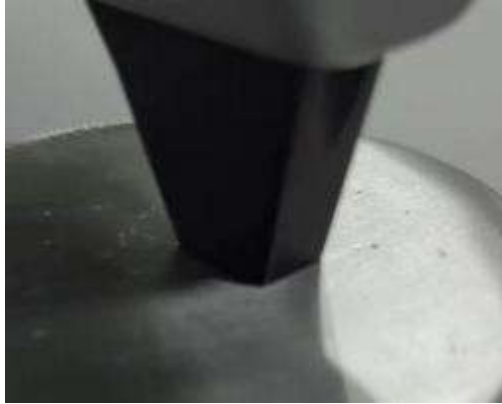
after the instrument is turned on)



1. In the alloy type column, you can check the alloy type to be analyzed, or check "Auto" to automatically identify and classify the alloy.
2. The test mode can be selected as " Quick " or " Accurate", and the count of analyzing can be set for accurate test.
3. Check "SaveData", the data will be automatically saved after the data test. And the data will not be saved if it is not checked (please be sure to check whether this option is checked before the sample test to avoid losses ,that is caused by the analysis data not being saved).

a) Quick test

Remove the protective cover of the instrument and the hole of detection is close to the alloy surface (Shown in the figure below).

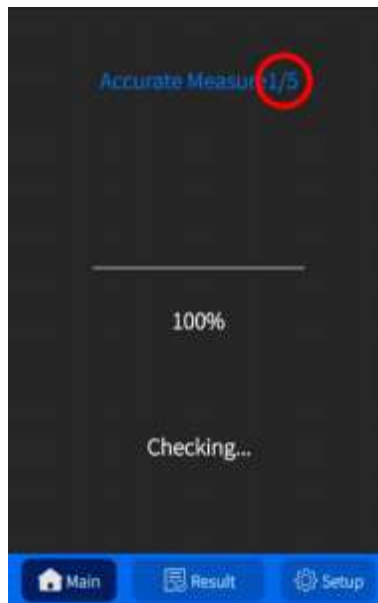


After pressing for 0.1~3 seconds, release the trigger button. The instrument prompts for sample analysis and emits a laser. And hears the crackling sound of the laser breaking through the air, indicating that the sample is being analyzed.

Sample test is a fast analysis in just 2 seconds. And the software will automatically switch to the test results page after the test is completed. And the sample type and elemental content will be displayed immediately (displayed on the numerical interface).

b) Accurate test

The hole of detection is close to the surface of the alloy. And multiple positions of the same sample are selected for testing until the set count of testing times is met (the top of the main interface will prompt the number of measured times and the set count of testing times, which are displayed in the form of fractions. As shown in the red circle in the figure below). Automatically switch to the test result page after the test, and the sample type and element content are displayed immediately. Accurate test is more accurate than quick test.



3.5 Instrument Networks and Equipment Maintenance

- **Instrument networks to update the software. The instrument is normally turned on. Slide down from the top of the screen. Pull out the setting icon bar. Press and hold the WLAN icon, enter the WLAN setting page. Click the corresponding WIFI name and enter the password. The instrument will be automatically linked to the network. It will take 20-30 minutes to update the instrument software. Please wait patiently, do not touch the instrument screen and trigger during the update.**
- **Strong impact is likely to cause irreversible damage to the instrument. And the instrument should be avoided from falling and being hit. After the instrument is used and during transportation. Please be sure to place it in a special protective box and lock the lid of the box.**
- **If the instrument is not used for half a year, please take out the battery and store it separately from the main unit of the instrument to keep the instrument and battery dry to prevent corrosion.**
- **Avoid the temperature change of more than 15 degrees Celsius in the high humidity environment when the instrument is turned on. The sudden drop in temperature in the high humidity environment may cause the water vapor in the ambient gas to condense inside the instrument. Resulting in damage to electronic and optical devices.**
- **To avoid damage to the instrument, do not place it in rain or immerse it in water. Although the instrument is able to withstand a small amount of water splashing for a short period of time. If you find that the device has been wet with water droplets, dry the case immediately and make sure that the inside of the device is not damaged by water before use. Please note that damage caused by water ingress of the device due to improper use may not be supported by warranty service.**
- **Clean the optical window of the instrument's test port regularly or as**

needed. When significant dust deposits are observed, ear wash balls or canned compressed air can be used to purge the window. If these devices are not available, the window can be gently wiped to remove the deposited dust using tools such as dust-free or dust-free cleaning swabs, mirror cloths, mirror cleaning paper, etc.

- **Do not disassemble or attempt to repair the hardware by yourself. When the instrument fails, try restarting the device first. If the problem persists, contact the manufacturer or dealer for technical support.**

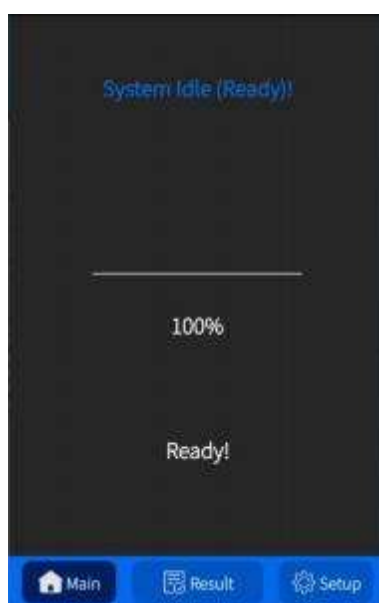
4. Instructions of Software

4.1 Software Interface

The instrument software starts automatically when it is turned on. And you can view three main pages including Main, Result and Setup after startup.

a) Main Page

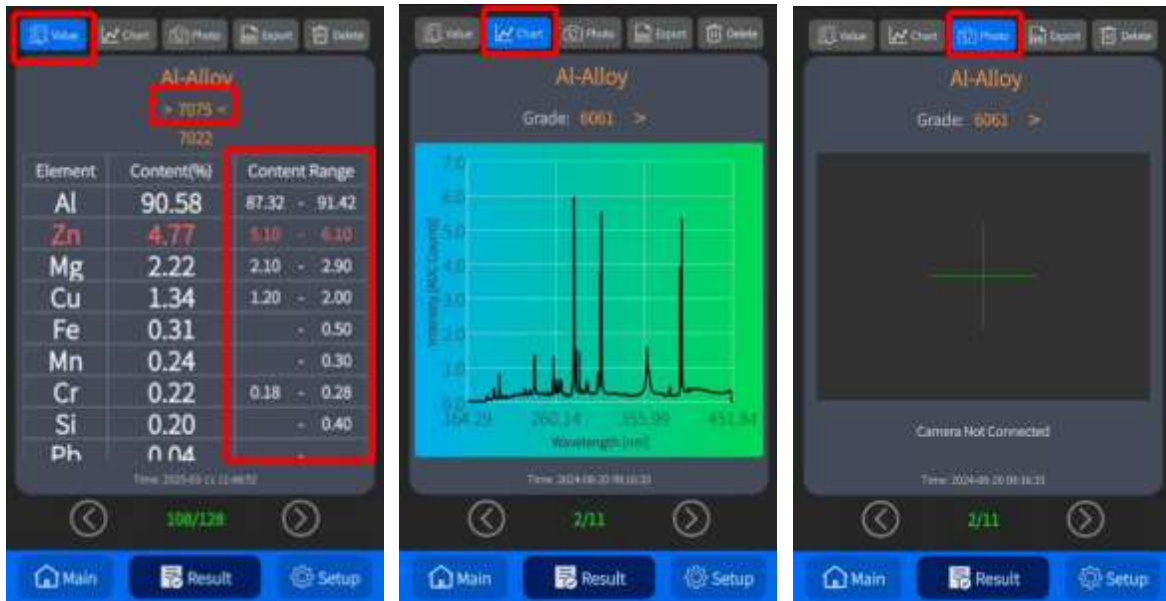
Main page displays the current instrument readiness status, and when the instrument is in the ready state. Main page is displayed as follow.



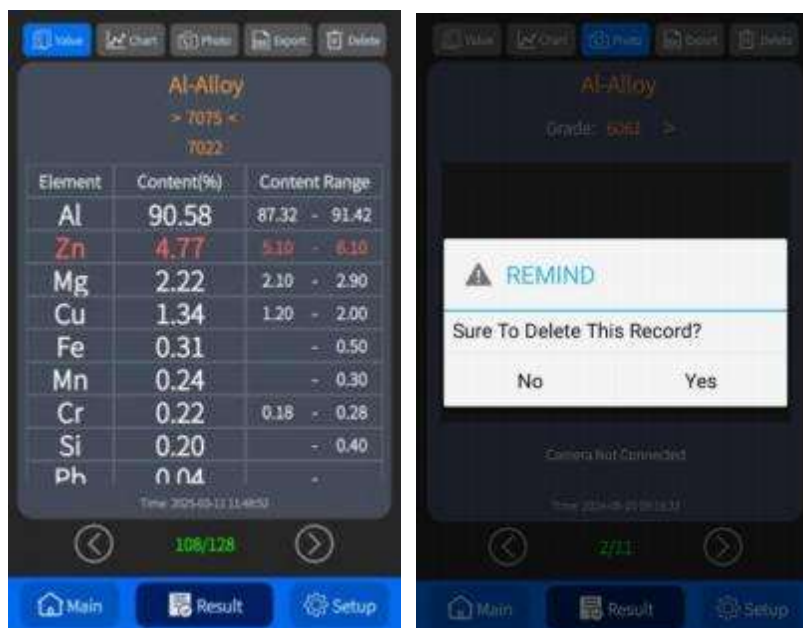
If the progress bar is not 100%, it means that the instrument self-test has not been completed, or the component is faulty. In this case, restart the instrument, and if it still does not enter the ready state, contact the manufacturer or distributor for technical support.

b) Result Page

Result page enters the default display of the analysis result value, including the sample test time information, the content of each element in the sample (in percentage form) and its corresponding alloy matrix type and grade, each sample identifies 2 grades, by clicking the ">" button next to the grade, view the element content range of different grades (the alloy grade is not included in the alloy library, the number of recognized grades is 1 or no adaptation). The historical data can be viewed through the left and right arrows of the touch interface.

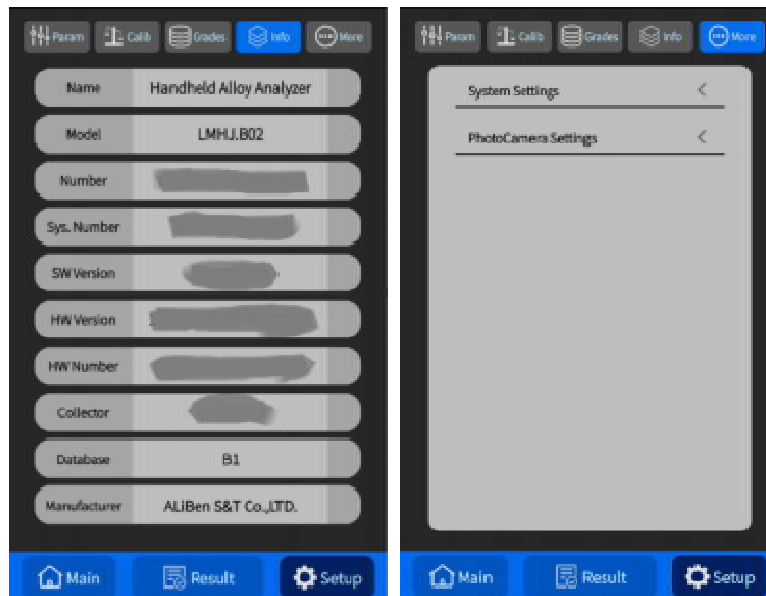
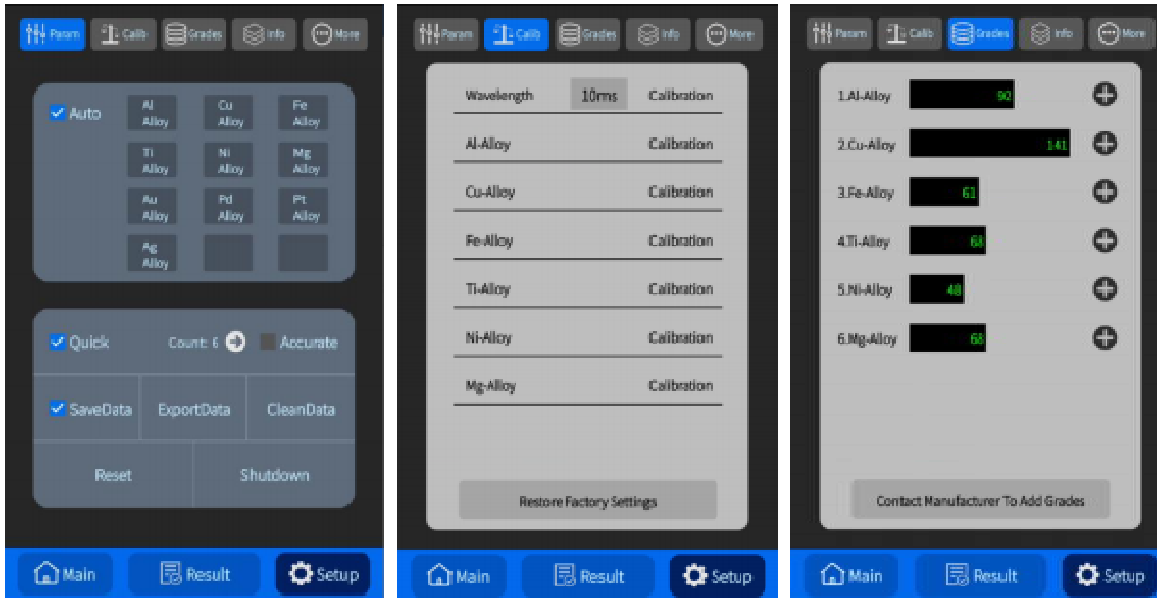


Functional options	explain
Value	Check the elemental content tested and the corresponding grade (Elements outside the grade value range are shown in red)
Chart	View Spectrum
Photo	Take an image of the wide-angle camera and save the photo (on the current page, press the trigger to take a picture, and the picture will be automatically saved in the sample test document)
Export	Export detecting record
Delete	Delete detecting record



c) Setup Page

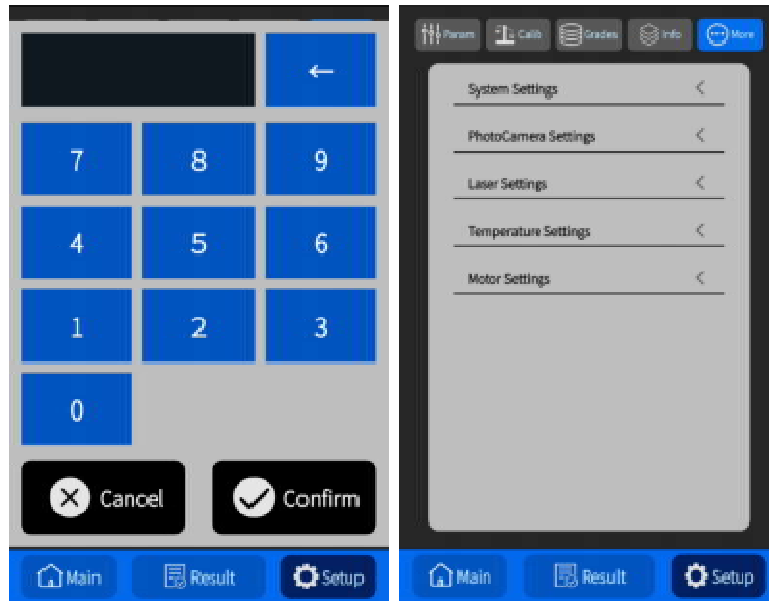
The instrument analysis parameters are displayed by default on the setup page, and each function is described below.



Functional options	explain
Param	Analyzing setting (Alloy type, test mode, data processing); Data management; shutdown switch; reset switch
Calib	Wavelength Calibration, Strength Calibration of Al-alloy, Strength Calibration of Cu-alloy, Strength Calibration of Fe-alloy
Grades	Manage grades

Info	View the information about Software Version、Marque and Software Version
More	System settings、PhotoCamera settings

NOTICE: If you need to change parameters of the laser, temperature control and motor setting parameters of the device. Please contact the manufacturer for technical support. The hidden parameter settings need to connect the blank space three times, and enter the password in the pop-up window before the hidden parameter settings will be displayed.



4.2 Instrument Operation Parameter Setting and Optimization

The instrument operation parameter settings are mainly changed on the "Setup" page, and the pre-analysis settings are prioritized in the setup page.

a) Parameter Setting

Parameter setting before Analyzing:

Automatic identification	Automatic identify alloy type	Alloy type	The type of alloy which will be tested
Quick test	Analyzing once to get the result	Accurate test	Analyzing times to get the result
SaveData	Save data	Data Setting	Export and Clear all the testing datas
Reset	Dismiss the instrument error	Shutdown	Turn off the instrument

4.3 Calibration

The instrument is portable, and timely correction is required during environmental conversion and long-term use aging. It is recommended to do it once every 1~2 months.

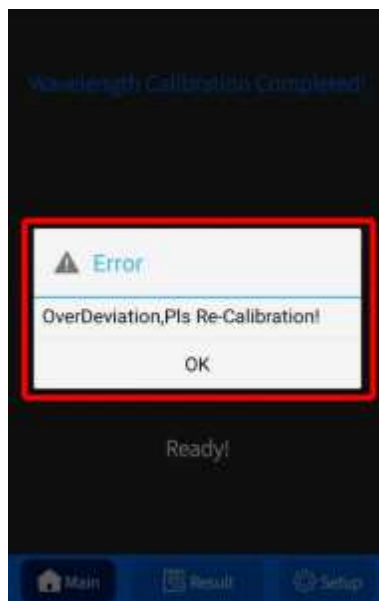
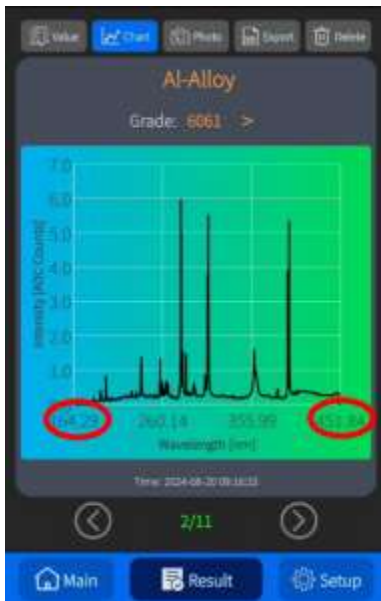
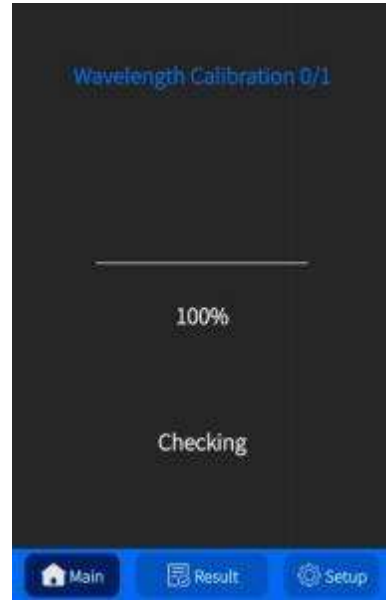
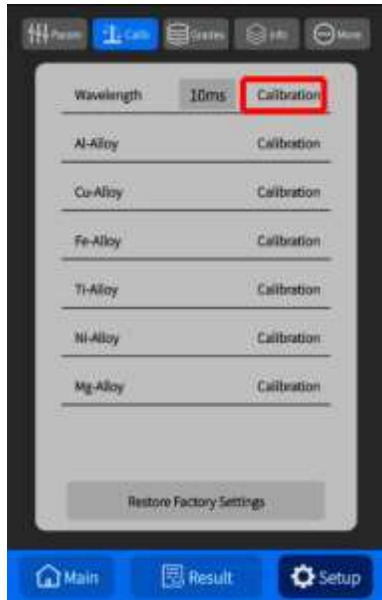
a) Wavelength Calibration

(Wavelength Calibration : Spectral wavelengths specifically corrected for instrument testing)

The instrument is turned on normally. After the warm-up is completed. The laser of the instrument reaches $40\pm 0.5^{\circ}\text{C}$, and the spectrometer reaches $40\pm 0.5^{\circ}\text{C}$ (the "More" tab of the "Setup" page, see in "System Settings").

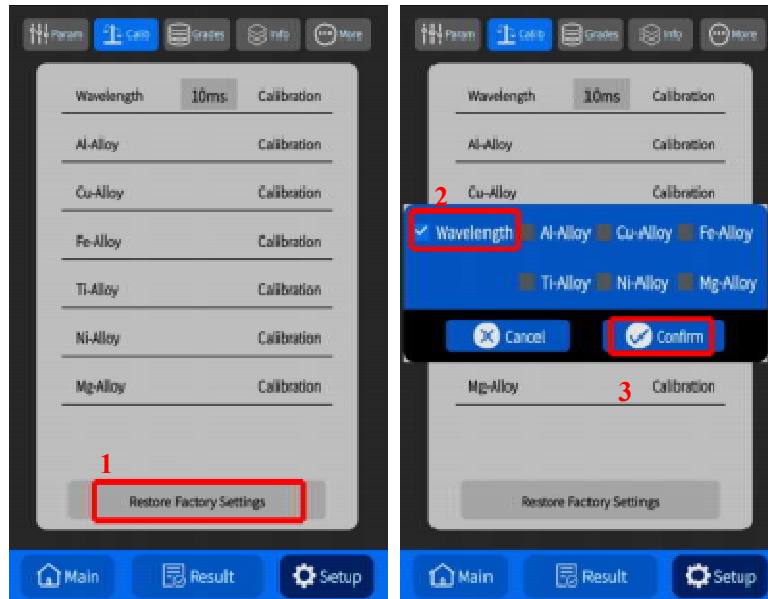
In the "Wavelength Calibration " column of " Calibration ", click "Yes", no need to change the set the laser integration time (**the default is 20ms, some instruments will have parameter differences**). Enter the main interface of wavelength correction. Put the calibration sample at the test port for one test. And automatically perform wavelength correction after completing the number of test tests. The correction sheet is shown in the figure below.

Polishing the sheet metal of Wavelength Calibration: When the surface of the sheet metal of Wavelength Calibration has been tested one time and is covered with test marks. The sheet metal of Wavelength Calibration need to polish with supporting sandpaper until the test marks are not visible to the naked eye (pay attention to the smoothness of the test surface, do not only polish a single position, which is easy to cause the test surface to be dented).



After calibrating of wavelength, the test sample spectrum, which is in the chart view on the result page, is on the wavelength-intensity axis of the wavelength-intensity coordinate. The start and end of wavelength values (shown in red, in the left figure) is same as before the wavelength calibration.

If the deviation of the wavelength calibration is large, the instrument will report an error during calibrating. And it is better to re-calibrate it, or restore factory setting. (Setup → Calib → Restore Factory Settings → Wavelength/Al-Alloy/ Cu-Alloy / Fe-Alloy [The alloy is about the Strength Calibration. It can be used if strength calibrating is incorrect multiple times.] → Confirm, shown in the figure below)








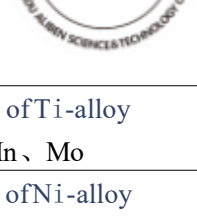
b) Strength Calibration

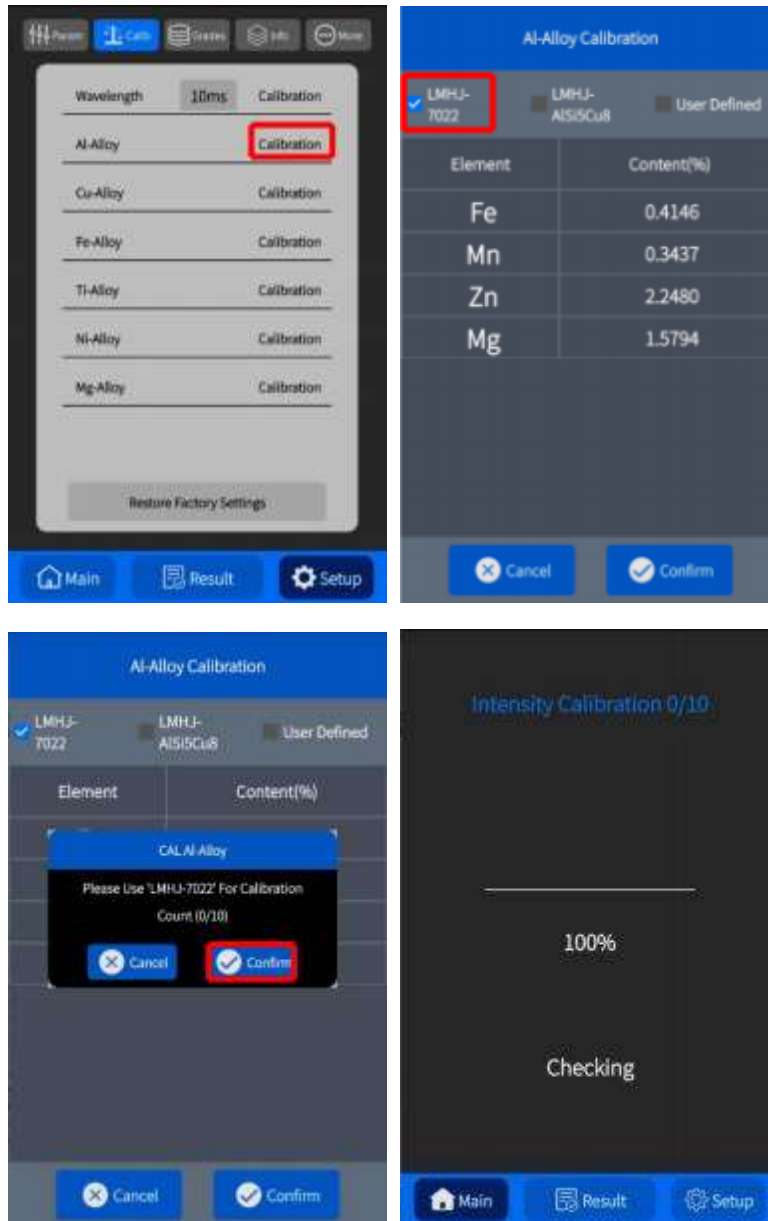
The instrument completes the warm-up phase. Then take the Strength Calibration (Strength Calibration is specially modified to calibrate the elemental analysis curve of the alloy library, and the correction analysis curve makes the instrument analysis more accurate) .

Setup→ Calib→ Al-Alloy (or “Cu-Alloy”、 “Fe-Alloy”) + Calibration. Go to the selection page of "Al-Alloy Calibration ".

Tick the sheet metal of Wavelength Calibration which is named LMHJ-7022 (or LMHJ- AlSi5Cu8) with the corresponding numbers. The content of the standard sample on the screen is not an accurate value, the actual content is subject to the "standard" form, click the "confirm" button at the bottom, and confirm the corrector number again in the pop-up window, click "confirm" to collect the spectrum (proofing in the center of the 2/3 radius length of the standard sample. 10 times in different positions), and then collect the spectrum of another calibrator of the alloy according to the same path and method again, and finally the instrument automatically corrects the strength of the aluminum alloy. The calibration standards of aluminum alloy, copper alloy and ferroalloy in the instrument are two Strength Calibration tablets, the number and label are shown in the following table, and the two standard samples must be calibrated to achieve the strength correction of an alloy library. **Please operate according to the specification for Strength Calibration, otherwise you will be responsible for the data error.**

The alloying element content of the Strength Calibration sheet can be found in the "Standard" form, which is in the accompanying document.

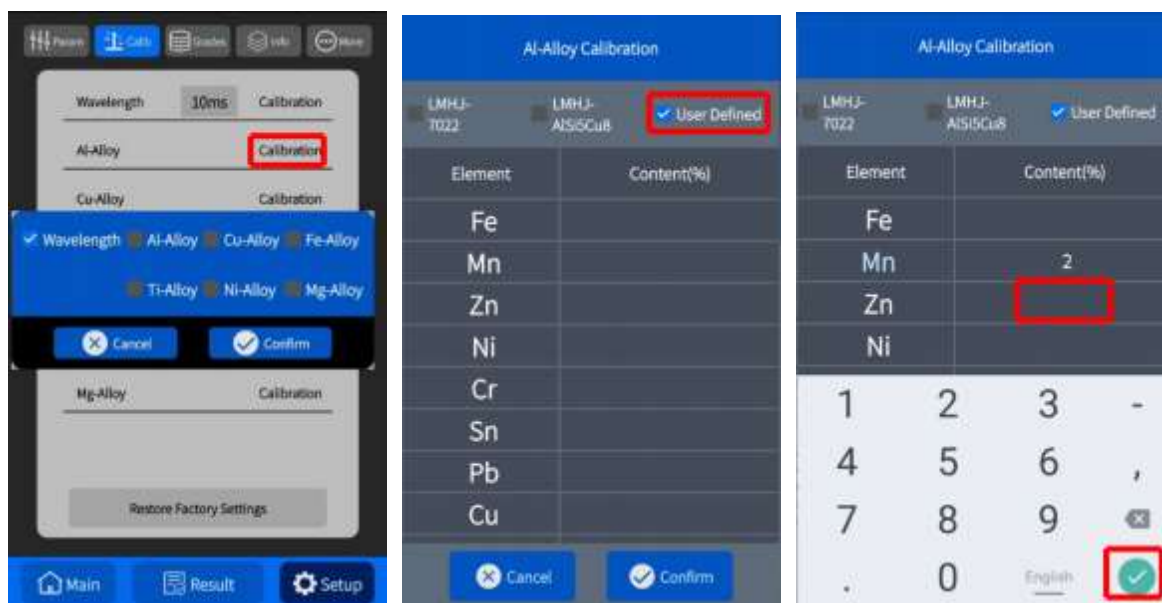
Alloy type	number	Using/Calibrating elements	Label
Al-alloy	LMHJ-7022	Strength Calibration of Al-alloy Fe、Mn、Zn、Mg	
	LMHJ- AlSi5Cu8	Strength Calibration of Al-alloy Si、Cu	
Cu-alloy	LMHJ-CuAl8Mn14Fe3Ni2	Strength Calibration of Cu-alloy Al、Fe、Mn、Ni	
	LMHJ-ZQSn5-5-5	Strength Calibration of Cu-alloy Zn、Pb、Sn	
Fe-alloy	LMHJ-904L	Strength Calibration of Fe-alloy Cu、Cr、Ni、Mo	
	LMHJ-MQTMn7	Strength Calibration of Fe-alloy Mn、Si	
Ti-alloy	LMHJ-TC18	Strength Calibration of Ti-alloy V、Cr、Fe、Mn、Mo	
Ni-alloy	LMHJ-GH4169	Strength Calibration of Ni-alloy Cr、Fe、Ti、Mo、Nb	
Mg-alloy	LMHJ-2633	Strength Calibration of Mg -alloy Mg、Si	
	LMHJ-9152	Strength Calibration of Mg-alloy Mn、Cu、Zn、Y	



If you need to use other reference materials for calibration, use "User Defined" calibration, the supporting standard calibration and other standard materials used for custom calibration can be calibrated at the same time, or can be calibrated separately, the final standard of the intensity correction element is based on the latest calibration intensity of the standard (the element displayed on the screen of the calibration is the corresponding element of the calibration of the calibration film) or the content of the reference material. **Suggestion: It is best to use a custom intensity calibration standard that is close to the material and content of the sample to be analyzed, so that the analysis is more accurate after calibration.**

First check " User Defined ", click on the blank space of the "Content(%)" column of each element, enter the content, and click " ✓ " to confirm the input content, after entering the content of the element to be corrected, click the "Confirm" button at the bottom, and confirm the standard sample again in the pop-up window, click "Confirm"

to collect the spectrum, and finally the instrument automatically corrects the strength of the matrix alloy.



After the strength calibration, the instrument uses the "Accurate" mode, the number is set to 5 times, the sample is retested. And the relative deviation between the retested content and the element content set by the calibration is calculated. The relative deviation between the remeasured content value of the corrected element and the element content set by the calibration shall meet the requirements of the following table:

Content range of calibration/%	Relative deviation
0.1-1.0	<25%
1.0-5.0	<15%
5.0-10	<10%
10-50	< 5%

If the retest continues to be high or low after calibrating times, please click "Restore Factory Settings", check the alloy type that has failed to be calibrated many times, and click "Comfirm" to restore the factory calibrate parameters of the alloy type. The calibration element is then re-tested or a specific element in the alloy type is recalibrated until the calibration is qualified.

4.4 Saving and Exporting Testing Datas

This device supports exporting data to an external storage device, pull the seal on the right side of the instrument, connect it using the type-c USB interface, Micro USB interface, or insert SD card or TF card (Micro SD card).

a) Exporting testing data

You can view the current and historical data under the "Result" page, connect the external storage device (USB flash drive or SD card) with the instrument, and click the "Export" button as shown in the figure below to store the current page display data in the external storage device in PDF file format, the document is in a file named ExportData, and the file name is the test time of the sample by default.

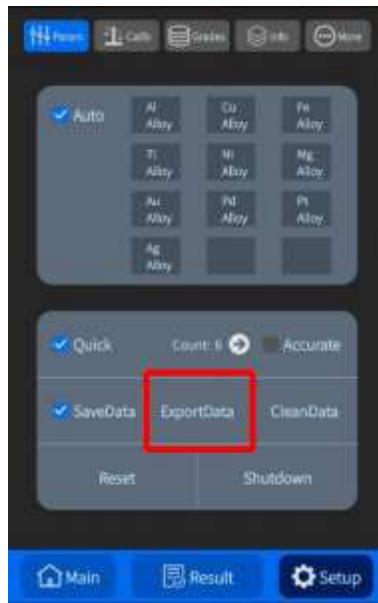


Click "Export", select "Yes" in the pop-up window, automatically select the external storage device as the save path, and the export end pop-up window prompts "Export record successful", click "OK" to end the single data export.

b) Exporting all testing datas

Connect an external storage device, click the "Param" interface on the "Setup" page, click the "ExportData" button, select "Yes" in the pop-up window, automatically select the external storage device as the save path, and the export end pop-up window prompts "Data export successful", and click "OK" to end the data export. The default folder name is ExportData, the Average folder in the Data folder of the file contains all the test data, which is saved in xlsx format, the name of the xlsx file is the time when the sample was tested, the average spectral data of each data is in the Data_Sheet subtable, and the test results and test condition information are in the Information_Sheet subtable; A separate Raw folder contains all the test data, except that the raw spectral data for each

sample is stored in Data_Sheet subtable.



In the **ExportData/Data**:



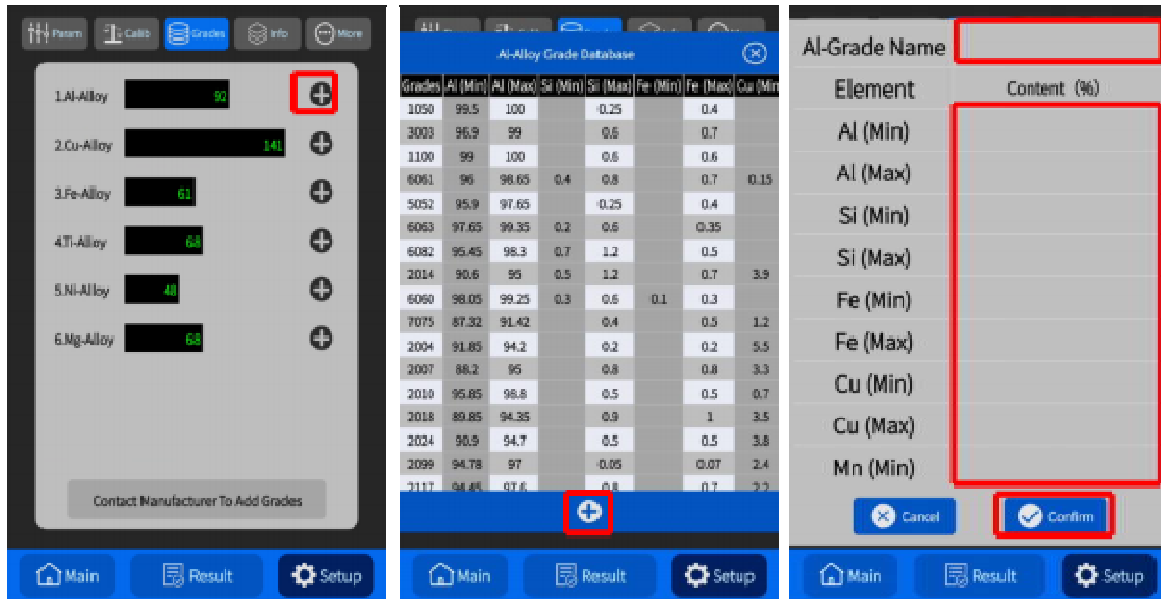
c) **Clearing all historical datas**

Click the "Setup" → "Param" → "CleanData ". In the data erasure column, click the "Yes" button in the data erasure confirmation column to clear all the historical data in the instrument.

WARNING: This wipe function cannot be restored, so make sure that the historical data is properly saved and backed up before data cleanup.

4.5 **Add the alloy grade**

At the bottom of the "Grades", click the "+" button to enter the alloy grades Database. At the bottom of the brand library, click the "+" button to enter the addition page of the alloy grade. And fill in the name of the alloy grade. The upper and lower limits of the content of each element (the sum of the content of the upper and lower limits of the element does not exceed 200, otherwise an error will be reported: the content input is WRONG. Click the "OK" button to modify it again). Then click the "Yes" button to complete the addition of the grade.



4. 6 Modify and Delete the Alloy Grade

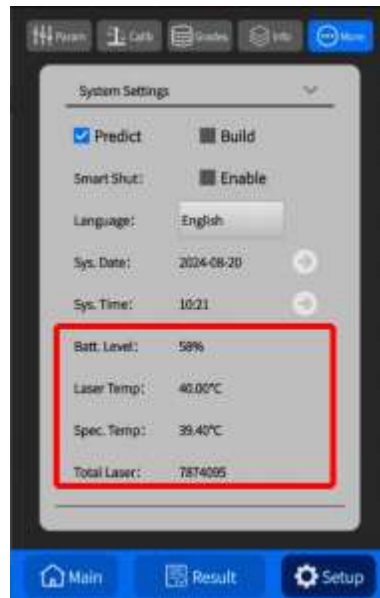
In the alloy grade Database, click on a single grade, double-click on the grade to prompt immediately. Delete and modify the pop-up window of the grade, click "Delete" to delete the grade immediately, click "Updata" to correct the element content.



4. 7 System Settings and Photocamera Settings

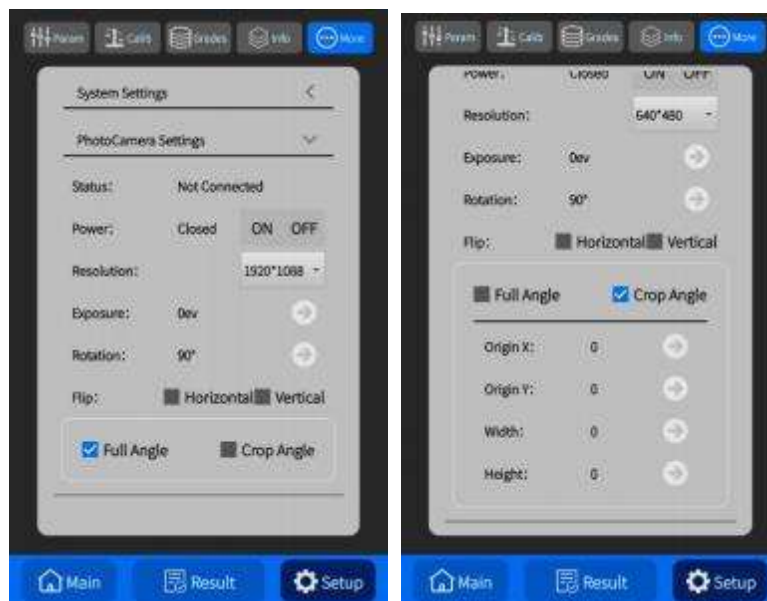
In the "More" column of the setup page, click the "<" button of "System Settings" to pop up the system settings page. The mode of testing can be the conventional "Predict" or the "Build" of establishing a new alloy test model. With the activation of "Smart Shut", the temperature control of the laser will be turned off after 10 minutes of standby.

The device will automatically shut down after another 10 minutes. Language setting can choose English or Chinese . Instrument time need set "Sys.Date" and "Sys.Time", by clicking the following "→" after the "Sys.Date" and "Sys.Time". View the instrument's battery level, laser temperature, spectrometer temperature, using sum total of laser in the red frame.



In the "More" column of the setup page, click the "<" button of "PhotoCamera Settings" to pop up the photo settings page.

You can choose to turn the camera on and off, and set the camera resolution, exposure compensation, lens rotation angle, image flip, full angle of view, and crop angle of view. The crop angle can be set to determine the size and position of the display screen of the shooting lens according to the set starting point coordinates and the length (height and width) of the crop.



5. Troubleshooting

5.1 The test process does not start after pressing the detection trigger

In routine use, the instrument will enter the data processing phase at the end of the analysis. During which the detection trigger will be pressed more than once to remind the excitation not to repeat. And after a delay of a few seconds, the data of the analysis results will be displayed. If the trigger is pulled continuously, the instrument will report the error "Equipment Abnormal". Click the "Reset" button on the setup page and confirm, and it can be recovered.

In normal use, the test process does not start after pressing the detection trigger, you can press the detection trigger again after an interval of 1 second, after two attempts to no avail, click the "ShutDown" button on the settings page, then press and hold the trigger to restart the device. When the software completes the self-test and enters the ready state, try the test again and confirm whether the trigger is pressed correctly. If the test process still cannot be started. Or the instrument cannot complete the self-test. Please contact the manufacturer or engineer for technical support.

5.2 The instrument automatically shuts down during use

Check that the battery is installed correctly and try to replace the battery. If the machine fails to turn on or the automatic shutdown phenomenon persists, please contact the manufacturer or engineer for technical support.

5.3 The results of the analysis differed greatly from the standard values

First of all, confirm whether the optical window in the front of the instrument is seriously polluted. Clean the optical window according to the hardware use of this manual - the daily maintenance part of the instrument hardware.

Secondly, to confirm whether the alloy type of the sample matches the selected quantitative model. The automatic identification mode can be used as much as possible to avoid the error. If the type of alloy sample tested is not included in the instrument analysis type, you can view the spectrum data. The test data of the alloy sample is only used for reference.

If the difference in results cannot be eliminated, it can be corrected according to the "Instructions of Software - Calibration" section of this manual.

6. Abbreviation Search

Abbreviation	Full name
Batt. Level	Battery level
Total Laser	Using sum total of laser
Sys. Date	System data
Sys. Time	System time
Con. Status	Connection status
Run. Status	Run status
Laser Temp	Laser temperature
Spec. Temp	Spectrometer temperature
RT	Real time
PCB	Printed Circuit Board
Der. Time	Derivative time
TCM	Temperature control module
Info	Information
Param	Parameters
Calib	Calibration
SW Version	Software Version
Sys. Number	System serial number
HW Version	Hardware version
HW Number	Hardware number

7. After-sales Information

8. Revision History

version number	Release date	Revisers	revisory content
01	2024.08.21	Shaolong Hu	first edition
02	2025.03.12	Shaolong Hu	Software interface is modified

Disclaimer of Warranties

Although we have carried out sufficient R&D, testing and quality control of our analytical instrument products. We are not responsible for any of the following matters as we have no control over the various circumstances in which they are used:

- **Any accident or loss caused by improper operation or failure to follow the user guidelines and safety operation manual.**
- **Any damage, failure or repair of this product during use, as well as the loss of the user directly or indirectly caused by these circumstances.**
- **Any situation in which the product fails to meet the specific needs or intended use of the user.**
- **The accuracy or completeness of any data or results generated during the use of this product, and the loss of users due to inaccurate or incomplete data.**

Please note that this disclaimer does not exclude or limit our liability for any loss or damage arising from a defect or manufacturing problem in the product to the extent permitted by applicable law. Our maximum liability for any of the above losses or damages shall not exceed the price paid by the user.

By using our analytical instrument products, the user agrees to and accepts the terms and conditions of this disclaimer. If you do not agree with any of the contents of this statement, please stop using the product. document is revised and republished to users.