



GC2000

- IoT-enabled
  - EPC module
  - Controlled remotely via browser
  - Data can be stored in multiple ways -
- Great balance between cost and performance



GC3000

- The ultimate balance between cost and high performance
- Independent EPC module
- Direct access via browser
- 4" touch screen for realtime plotting and instrument control



GC6000

- An innovative Configuration UI
- Oven lamp
- Direct sample injection without a PC
- Direct access via browser
- Intelligent diagnosis
- Built-in data storage for up to 180 days -
- 7" touch screen
- Couple 8000 quadrupole MSD

# GC 2000

## Cost Effective GC

- EPC control with 0.01psi
- Access to GC via web browser
- Compact design
- Simple Maintenance
- Smart Connectivity



The GC 2000 inherits the features of high-quality GC. It has an excellent design and can be equipped with dual injection ports and dual detectors. The flow control accuracy (EPC) is 0.01 psi to ensure excellent reproducibility.

GC column oven with precise temperature control is maintained across 8 independent heating zones for superior method stability.

It can install up to 2 detectors (FID, TCD, uECD), ensuring high sensitivity and high selectivity.

It also allows for flexible configuration and combination, making it the smart, cost-effective choice for a wide range of laboratory applications.

### uniMeta Software: Smart Control. Anywhere. Anytime.

Leveraging advanced IoT, uniMeta centralizes management of multiple GCs via web browser. Remotely monitor, control, and process data with intelligent efficiency, streamlining your lab operations.

### Maximize Precision with Full EPC

Equipped with full Electronic Pressure Control (EPC) for both the Inlet and Detector, our system delivers superior carrier gas stability. This advanced technology ensures every run is repeatable and accurate, significantly reducing experimental errors. Plus, enjoy the flexibility to switch between analysis methods in mere seconds, boosting your lab's efficiency.

### Compact & Rugged Design

Space-Saving: Ideal for laboratories with limited bench space.

Rugged design: Built for long-term durability in challenging environments

Versatile Integration: Easily fits into setups ranging from small research facilities to teaching labs.

Powerful Performance: Delivers full analytical capability in a compact size

### Economical High-Performance GC

Maximize your lab's budget with this economical Gas Chromatograph.

Specifically built for routine analysis, it offers a low cost of ownership while maintaining high reliability and ease of use. It is the ideal workhorse for applications ranging from environmental testing to rigorous quality control

### GC 2000: Affordable Performance, Effortless Maintenance

The GC 2000 is designed for simplicity, featuring four front-panel shortcut keys for immediate access to routine functions, with an optional touchscreen interface available. Its smart, modular engineering—including accessible EPC and circuit board components—ensures that upgrades and repairs can be finished in minutes. This focus on easy maintenance drastically lowers long-term costs and downtime. Even with a limited budget, the GC 2000 offers an economical pathway to world-class analytical performance.

# GC3000

## High Performance GC

- The ultimate balance between cost and high performance
- All-in-one modular detector module
- Direct access via browser
- 4" touch screen for realtime plotting and instrument control



### Global Command with uniLite Software

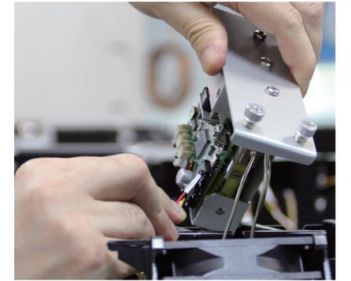
Monitor and control your instruments remotely with the new uniLite software. Its IoT architecture creates a smart, interconnected lab, enabling real-time method editing, data visualization, maintenance logging, and remote upgrades. Enjoy unparalleled convenience and efficiency, putting your lab at your fingertips, anytime, anywhere.

### Browser-Based Operation & Remote Control

**Universal Access:** Control instruments from any web browser, on any device.

**Remote Management:** Edit parameters and monitor instrument status from anywhere.

**Expanded Capabilities:** Go beyond basic control with a host of additional remote functionalities.



### Intelligent GC System with Full EPC

#### Full EPC for Ultimate Control

The GC 3000 series sets a new standard with full-electronic pneumatic control (EPC) in all gas systems – no manual valves, just pure precision. Built-in, market-proven temperature and back-pressure compensation algorithms ensure unwavering stability in any environment and seamless integration with complex setups like mass spectrometers.

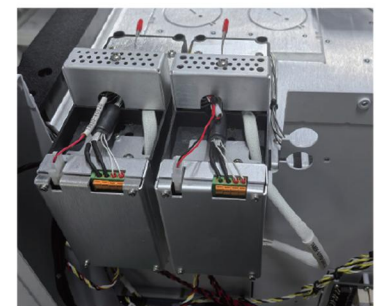


**All-in-One Design:** Our ultra-simple detector design consolidates mechanical components, analog amplification circuits, and signal processing units into a single, integrated module.

**Broad Compatibility:** Available for common detectors including FID, TCD, ECD, and FPD.

**Enhanced Performance:** This integration ensures both high sensitivity and exceptional ease of maintenance.

**Reduced Downtime:** Streamlined maintenance procedures contribute to less instrument downtime.



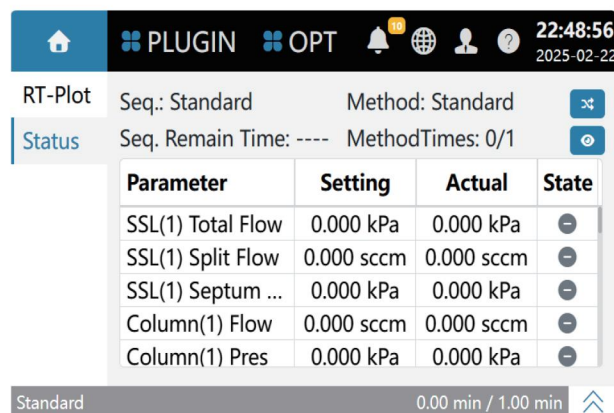
# GC 3000

High Performance GC

IoT GC:

Cost-Effective

Maintenance-Free



Parameter	Setting	Actual	State
SSL(1) Total Flow	0.000 kPa	0.000 kPa	[-]
SSL(1) Split Flow	0.000 sccm	0.000 sccm	[-]
SSL(1) Septum ...	0.000 kPa	0.000 kPa	[-]
Column(1) Flow	0.000 sccm	0.000 sccm	[-]
Column(1) Pres	0.000 kPa	0.000 kPa	[-]

Interface



## Browser User Interface: Your Lab, On Your Terms

Experience unprecedented control and flexibility with our advanced **Browser User Interface**. This intuitive platform empowers you to **continuously monitor your instrument's status** from anywhere within your laboratory network, proactively reducing unexpected downtime. Enjoy the freedom of **universal access** – manage your GC from any browser-enabled device, be it a tablet, laptop, or desktop. Effortlessly **edit GC methods and sequences remotely**, liberating you from the confines of a dedicated chromatography workstation. Critical "Diagnosis," "Maintenance," "Log," and "Help" functions are always at your fingertips, allowing you to **instantly review operational logs** or **consult the user manual** from any location. With the ability to **conduct comprehensive health checks and diagnostics network-wide**, you maintain optimal instrument performance and maximize lab efficiency.

## GC 3000: The Perfect Balance of Performance and Value

Built on the robust 3000 Series GC platform, the GC 3000 delivers an optimal blend of modularity, advanced IoT capabilities, superior performance, unwavering reliability, and outstanding cost-effectiveness in gas chromatography.

## Precision EPC for Unmatched Reliability

Equipped with a modular micro-flow EPC, the GC 3000 utilizes proven temperature and pressure compensation for significantly enhanced accuracy and reliability.

## GC 3000: Smart, Secure, and Always On

As a high-performance GC, the GC 3000 offers intelligent features to safeguard your work. It actively monitors its own health, keeps track of sample progress, and alerts you instantly to issues like leaks. Never lose valuable time, as analysis can proceed even if the instrument goes offline. With up to 90 days of raw data stored directly on the device, and seamless synchronization to your workstation, you gain peace of mind and drastically reduce the risk of lost data or analysis interruptions.

## GC 3000: Customizable to Your Needs

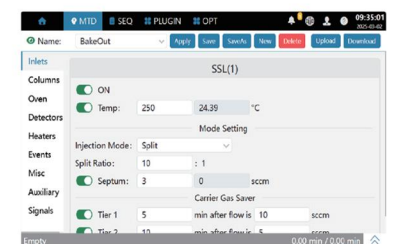
Equipped to handle most analytical tasks, the GC 3000 offers robust flexibility: up to 2 inlets, 3 detectors, and 3 valves. Extend its capabilities further with specialized modules like heart-cutting for even the most demanding applications.

## Cut Downtime, Boost Results: The Mx Flip-Top SSL Inlet.

Tired of slow, fiddly liner replacements? Upgrade to an Mx system with our game-changing flip-top split/splitless injector. It literally flips open for immediate access, letting you change liners in a flash. That means significantly less waiting, more samples run, and guaranteed consistent performance thanks to its secure, reliable design. Transform your GC workflow into a faster, more worry-free operation.



**Elevate your chromatography data quality through our advanced programmable septum purge function.** This intelligent feature actively works to reduce unwanted sample contamination and significantly minimize baseline noise, laying the foundation for exceptionally clear and precise results. By allowing users to meticulously program the purge flow, it directly enhances the analytical accuracy of your measurements, leading to more consistent and reliable data.



# GC 6000

## New IoT GC System

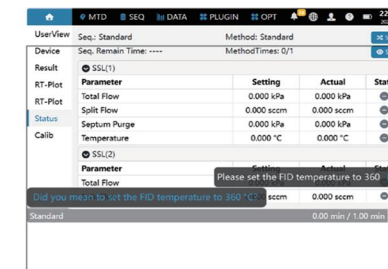


### uniLite Software: Intelligent Connectivity & Remote Control

Transform your lab with our game-changing uniLite software, offering seamless instrument access and control anytime, anywhere. **IoT-Driven Intelligence:** Built on an advanced IoT architecture, uniLite transforms each GC into a smart terminal, creating an intelligent, interconnected laboratory network. **Universal Browser Access:** Control your instruments from any web browser – whether on tablets, laptops, or desktops – with leading-edge remote capabilities. **Comprehensive Remote Management:** Edit methods and sequences View real-time chromatograms Manage daily maintenance logs Perform remote firmware upgrades **Unparalleled Efficiency:** Experience superior convenience and high operational efficiency through true instrument interconnection, unlocking more possibilities beyond basic parameter adjustment and status checks.

### Voice Control & Multi-Language Support (Optional)

Revolutionize your workflow with the ultimate in hands-free operation. Our advanced voice control technology allows you to command the instrument with ease, understanding over 20 languages – from English to Mandarin and beyond. Say goodbye to manual input and embrace a more intuitive, globally accessible way to interact with your GC, boosting efficiency and user comfort.



### Rapid-Replace Detector Modules: Maximize Uptime

Experience unparalleled ease of maintenance with the GC 6000's highly integrated detector modular technology.

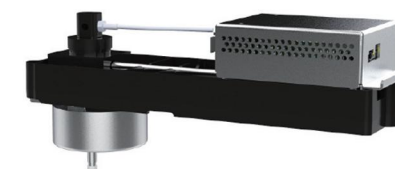
**All-in-One Design:** Each module consolidates the detector body, electrometer, and interface boards for ultimate simplicity.

**One-Minute Replacement:** Effortlessly swap out the entire detector module in just 60 seconds using a single cable.

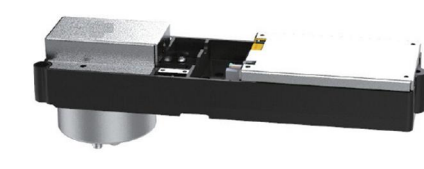
**Universal Compatibility:** Available for FID, TCD, micro-FID, micro-TCD, and micro-ECD, all designed as standardized, quick-swap modules.

**User-Friendly Maintenance:** Even beginners can perform installations swiftly, drastically reducing maintenance downtime.

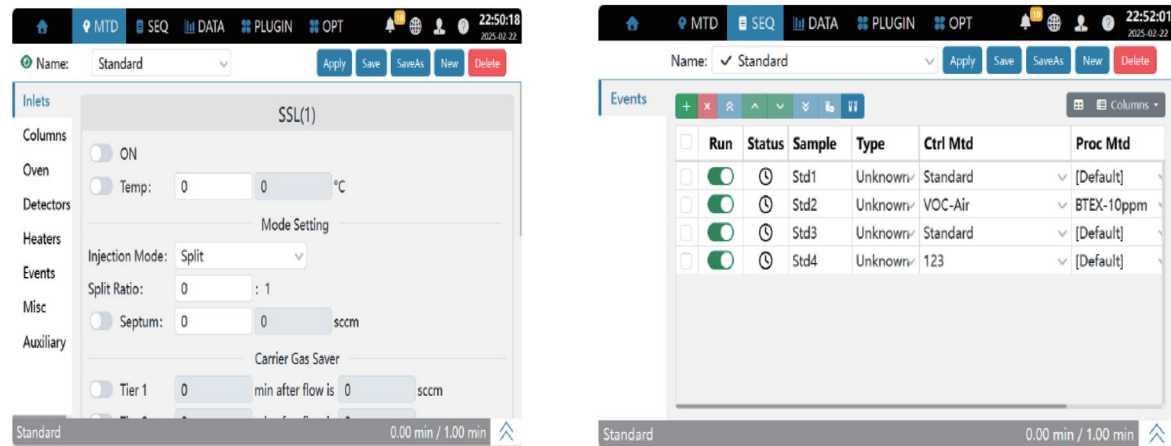
**Continuous Operation:** Empower your lab to stay productive and seize every analytical opportunity without costly delays.



FID



TCD



### Introducing Our Cutting-Edge Control Solution

Our advanced browser-based control method offers flexibility and efficiency in operating instruments: **Remote Access:** Edit parameters and monitor instrument status from anywhere.

**Centralized Control:** Open-style configuration technology allows seamless management of external hardware such as valves, pumps, and sensors.

**Integrated VPN:** Full terminal access globally, ensuring you can work from any location

### Offline Mode: Harness Independent Operation

**Stand-Alone Functionality:** Operates independently without a computer connection, enabling instant experiments and measurements.

**Secure Data Storage:** Reliable recording of essential data for future reference.

**Flexibility on the Go:** Ideal for various applications, providing unmatched convenience without computer dependency.



It can save data of 1 year continuous operation

The GC 6000 platform supports different types of valves, including rotary and diaphragm valves. You can integrate up to 8 injection valves into one instrument, making it adaptable to various analysis tasks.

It can also work with up to 5 detectors, allowing you to do the work of 3 to 4 instruments in one, streamlining your process. Choose from valve box configurations with four, six, or eight valves for the flexibility you need to tackle any challenge.



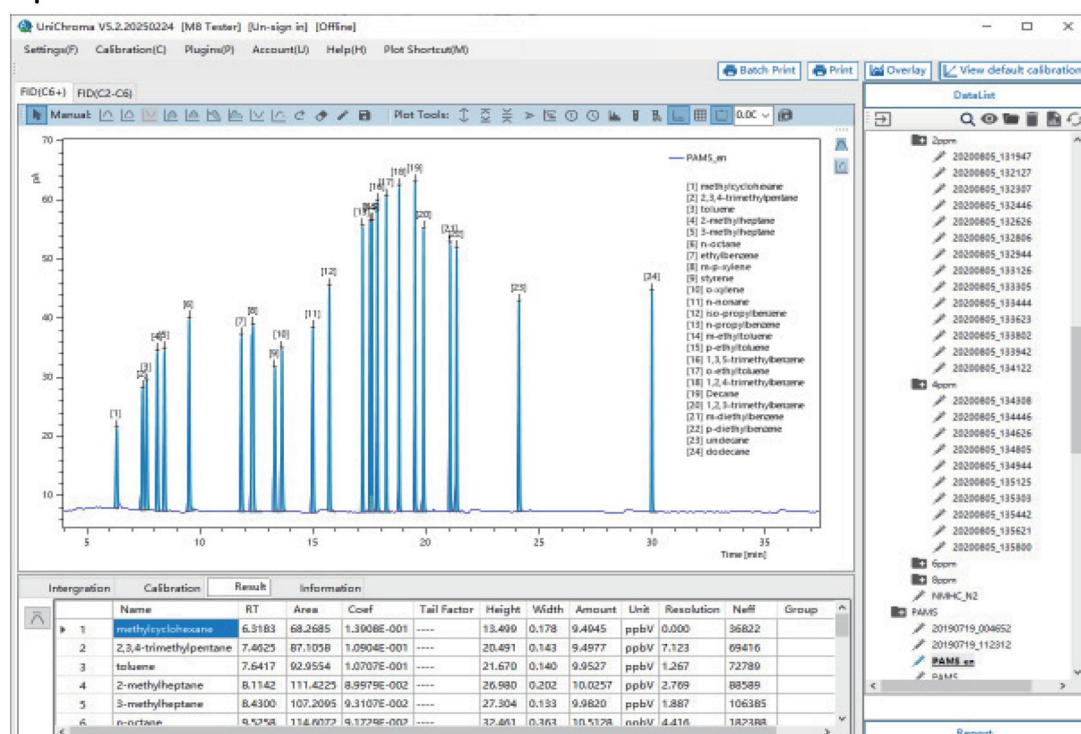
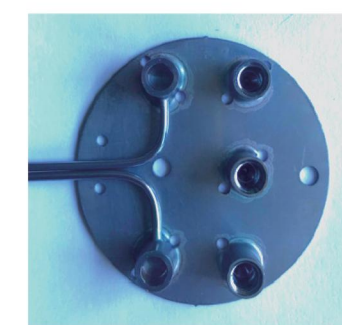
6 valves box for petrol industry



High-purity gas analyzer with 8 valves

The DeanSwitch heart cutting module, with its low thermal mass and micro-fluidic plate design, ensures that detecting trace compounds is easier and more reliable. Its stainless steel silanization technology minimizes sample loss in the tubing, enhancing your analysis process.

The system combines proven hardware with advanced software to simplify testing and deliver accurate measurements. The flexibility of integrating various components means you can customize the setup to meet your specific needs.



### User-Friendly UniStation Workstation

**Dynamic Status Display:** Graphically shows the instrument status in real-time.

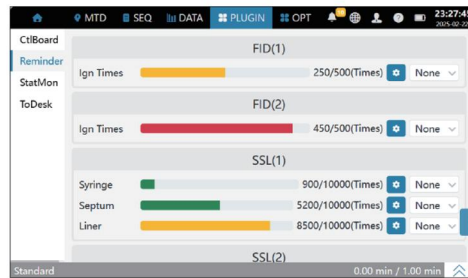
**Easy Integration:** Easily integrate external actuators and sensors within standard methods.

**Precision Tracking:** Track and lock retention times effectively.

**Custom Data Management:** Customize data outputs and perform advanced calculations with plugins.

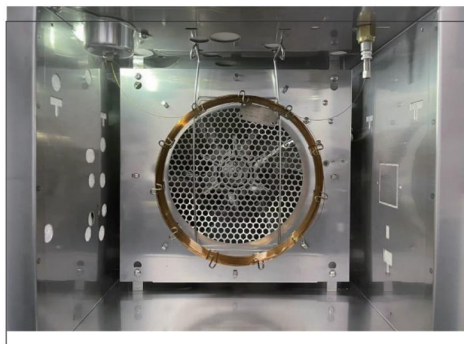
With smart consumable management, you can easily keep track of your consumables. The visual status bars show real-time usage, so you always know what you have left.

When it's time to replace an item, resetting the status is super quick—just press the reset button to clear the counters in just one second. You can also set up the progress bars for specific parts like syringes, septa, and columns, making it simple to stay organized.



Smart management of consumables

The built-in oven lights make it simple for operators to work on columns and maintain the equipment without needing extra lighting. This sufficient illumination helps prevent mistakes during operation and improves safety during experiments.



### HPLIS - High Pressure Liquid Injector

The HPLIS is designed for analyzing samples with both low- and high-boiling components (C1–C40+). It can be directly mounted above the split/splitless injector for continuous sampling of high-pressure liquid samples, so you won't need to do any manual sampling.

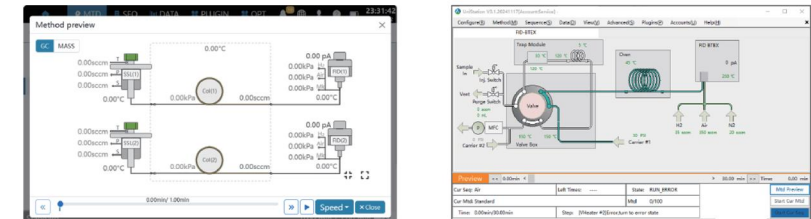
This system has several advantages over traditional vaporizers, including shorter transfer lines, faster vaporization, less residue, and a non-discriminatory way to introduce samples.



### Graphical Software for Easy Visualization and Preview

Our graphical configuration software is a game changer! It shows the real-time status of your system with colorful graphics, making it easy to see how each component is doing at a glance.

You can also preview how hardware changes will affect your methods before they happen, which is super helpful for complex applications. This allows operators to dig into the details, fully understand the process, and spot potential issues ahead of time. With this software, managing complex tasks becomes simple and efficient!



### UniMeta Browser - Your Accessible Network Workstation

Introducing our innovative network workstation for instruments! With UniMeta Browser, you can control multiple devices from one central location, accessing everything from different terminals on the network. All your data is managed in one place, making your workflow smoother.

Thanks to built-in AI, this system automates data analysis, generates reports, and reveals valuable insights. Plus, there's no need to install any software on your computer! Just use your browser to access all these smart features, making instrument management easy and hassle-free.

### Instrument Firmware Auto-Upgrades, Simple and Easy!

Our instrument is as smart as your favorite mobile app! It automatically upgrades its firmware and software through the server (LAN or WAN), so you always have the latest features and improvements.

There's no need for manual updates—just seamless and smart upgrades. Keep your instrument performing at its best with zero effort!

