

S61 Automatic Vaporizer

When users need to analyze high - pressure liquid samples like liquefied petroleum gas, high - pressure propylene, high - pressure ethylene, and butene, a vaporizer is typically needed to vaporize these liquid samples.

The S61 can be coupled with a gas chromatograph (GC) to analyze a wide variety of samples, including liquefied petroleum gas (LPG), liquefied natural gas (LNG), as well as impurities such as water, trace permanent gas and sulfides in the samples. This instrument can rapidly transform liquid or vapor - liquid mixed samples into gas samples with stable temperature and pressure, and work with the GC to complete sample analysis.

All parameters can be configured and programmed via a browser. The built - in high - quality components can guarantee the authenticity of the samples and offer users reliable and reproducible detection results.

Generally, issues such as discrimination and poor repeatability may occur during the vaporization process. The S61 employs a special heating vaporization valve to ensure a consistent pressure at the vaporization outlet. All sample tubing is inert - coated and heated to enable accurate measurements.

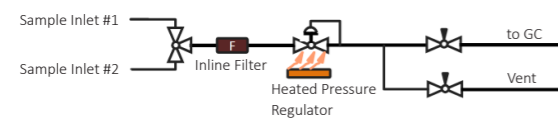


Diagram of S61



S61

Typical Applications

- Determination of trace water in ethylene and propylene for industrial use
- Determination of trace water in butadiene for industrial use—Coulometric Karl Fischer method
- Sampling methods of dimethyl ether, ethylene, propylene and butylene for industrial use
- Gas chromatographic analysis method for dimethyl ether content in liquefied petroleum gas
- Determination of components in liquefied petroleum gas—Capillary gas chromatography
- Test method for composition of liquefied petroleum gas (Chromatography)
- Gas chromatographic analysis method for components of liquefied petroleum gas

It can also be used for the analysis of trace water in vinyl chloride, and the analysis of trace oxygen and trace sulfur in various polymerization - grade olefins, as well as the analysis of trace water in refrigerants and SF₆.

Features

- Full gasification and auto - purging
- Atmospheric balance valve for sample loop to ensures high repeatability
- Auto - set injection time, volume, 350°C max temp (±0.1°C)
- 7 - inch touch screen shows operations and records history
- Inert coating for sample tubing
- Standard I/O for mainstream GC
- Browser access for status check, parameter edit/download
- Flowmeter for real - time flow monitoring
- Direct connection to Mx series GC, method editing in GC software

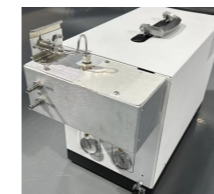
S61-X Multi-channel automatic liquid sample switching

Users can optionally install a fully - automatic multi - channel switching device on the S61's left. It can handle up to 4-6 channel cylinders at once, allowing the vaporizer to work with the GC to auto - select cylinders for purging, vaporizing, and sampling.

An inert coating sample transfer line can heated up to 250°C is installed from the S10's vaporized sample outlet to the GC gas inlet for high accuracy.

All cylinder connectors are customizable (default 1/4" quick - connect). The whole sample tubing from the bottom quick - connect is heated and insulated for fast, accurate vaporization of wide - boiling - point samples and excellent measurement repeatability.

User can manage the instrument via web browser without extra software.



S61-R Portable vaporizer - directly work with P6

For portable applications, the portable flash evaporation module provided by the S61 can be directly installed at the injection port of the P6. It is powered internally and can achieve the same - level accuracy in flash evaporation function. Its repeatability and accuracy are comparable to those in the laboratory. Users can choose this component to cooperate with the portable chromatograph to complete the analysis of typical samples such as all components of LPG and LNG, and the content of dimethyl ether.

Mechanical and Electrical Parameters

Operating temperature: 0 °C to 50 °C

Storage temperature: -20 °C to 70 °C

Operating humidity: 10% to 90%

Storage humidity: 5% to 90%

Touchscreen: 7 - inch touchscreen

Standard Sampling Cylinder Interface: 1/16" stainless - steel ferrule

Multi - channel Sampling Cylinder Switching Interface:

Stainless - steel quick - connect (customizable)

Sample Pipeline Heating: Full - length heat tracing for samples

Atmospheric Balance Valve: Standard configuration

Tubing Purging: Fully automatic

Supporting Software: Supports UniLite plugin; Supports PC-side control software

Access Method: The status of the instrument can be directly viewed or controlled via a browser

Sample tubing: 1/16" inert coating stainless steel tubing

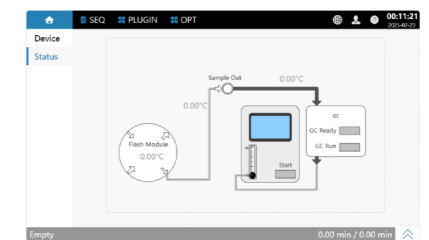
External Interfaces: RS485, RS232, TCP/IP, EVENT, BCD

Power Supply: 220V, 50Hz

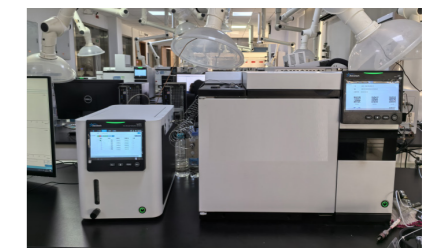
Power: 100Watt

Dimensions: 350*400*260mm

Net Weight: Approximately 25kg



UI of S61



S61 and GC60