

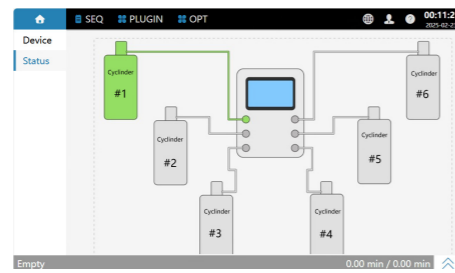
S6 Automatic Tedlar Bag Sampler

For users who need to repeatedly analyze gas bag samples, the S6100 features fully automated operation, enabling batch and automatic injection of gas samples into the GC. When work with Mx series GC, this automatic sample injector is suitable for a wide range of applications, including ambient air detection, cooling tower emissions monitoring, tobacco smoke analysis, soil water vapor sampling, and petrochemical gas analysis. The number of injection points of the instrument is selectable (12 as standard, with options of 18, 24, 36, etc.).



S6

- Equipped with vacuum pump and optional pressure monitoring for automatic purge
- Atmospheric balancing valve to ensure ultra-high repeatability
- Embedded UniLite software plugin enables seamless connection to M6/M3 GC control systems. Full integration with GC interface - no PC software installation required
- Built-in operation history tracking for full process traceability
- All internal sample tubing with inert coating
- Browser-based interface supports parameter editing/download
- Inspect real-time sample loop vent flow by built-in mass flow meter
- Standard I/O interface supports synchronization with major GC brands



UI



Mechanical and Electrical Parameters

Temperature: 0°C to 50°C (during operation); -20°C to 70°C (during storage)

Humidity: 10% to 90% (during operation); 5% to 90% (during storage)

Number of Injection Ports: 6/12/18/24/36 positions, etc.

Touchscreen: 7" touchscreen

Tedlar Bag Interface: Two-stage pagoda connector or ferrule (customizable)

Sample Transfer Line Heating: Customization is available

Atmospheric Balance Valve: Standard configuration

Tubing Purging: Fully automatic

Supporting Software: Supports UniLite plugin; Supports PC-side control software

Access Method: The status of the instrument can be directly viewed or controlled via a browser

Sample tubing: 1/16" inert coating stainless steel tubing

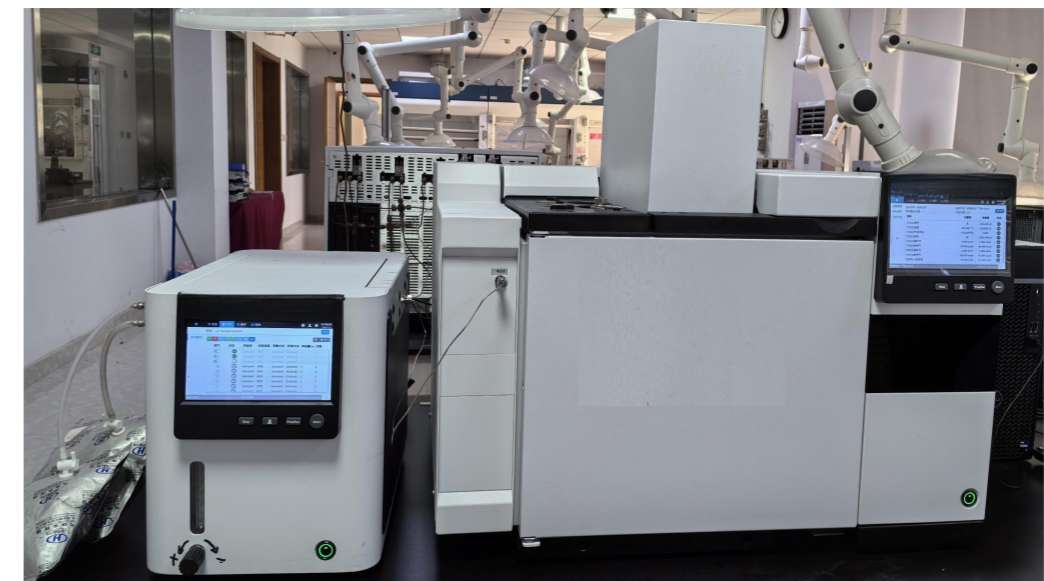
External Interfaces: RS485, RS232, TCP/IP, EVENT, BCD

Power Supply: 220V, 50Hz

Power: 50Watt

Dimensions: 350*400*260mm

Net Weight: ~20kg



GC60 and S6